

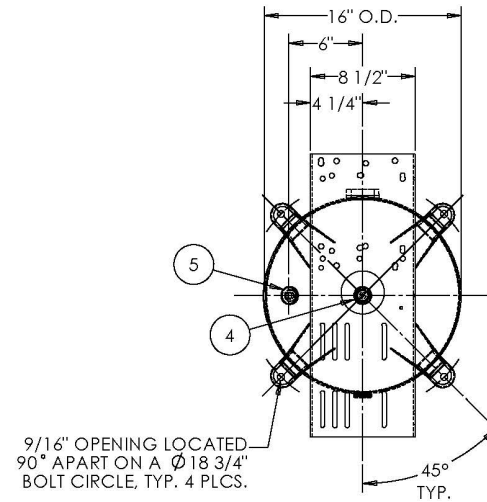
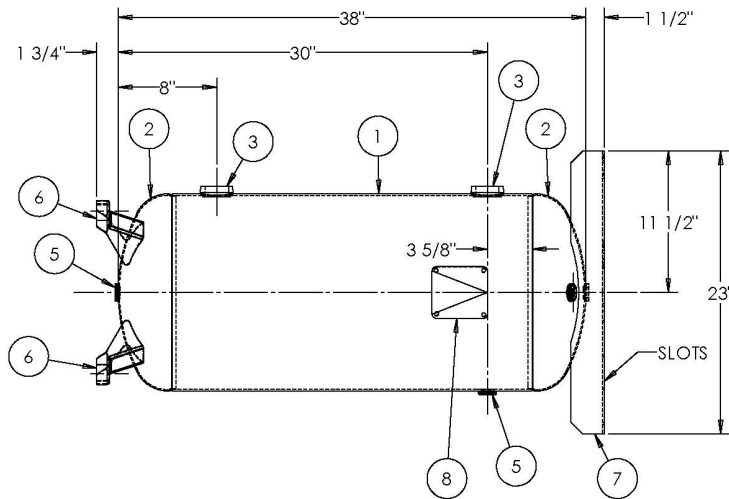
OMEGA COMPRESSORS

For us, it's not just business. It's personal.

APPROVED BY: _____ DATE: _____



ITEM NO.	PART NO.	DESCRIPTION	QTY.
1	309264-SL	SHELL LAYOUT FOR 16" TANK	1
2	H32011	.099 MIN. 16" O.D. 2:1 ELLIP. JOG. HEAD	2
3	F12430	1 1/2"-NPT 1500# RADIAL FLANGE	2
4	F10250	1/2"-NPT 1500# FLAT FLANGE	1
5	F31826	1/4"-NPT 1500# FLAT FLANGE	3
6	A20720.1	H18X DEF. FOOT	4
7	A96135	TOPPLATE	1
8	A20910	ASME DATA PLATE	1



9/16" OPENING LOCATED
90° APART ON A Ø 18 3/4"
BOLT CIRCLE, TYP. 4 PLCS.

NOTES:

CODE 2010/A- APPROVED DP
RELEASED FOR PRODUCTION
Q.C. _____ DATE _____

SPECIFICATIONS

O.D. 16 LGTH. 38
WT. 91 LBS.
S.A. 14.1 SQ.FT.
GAL. 30 CU.FT. 4 CRN: F2151.1C W
CODE: ASME Section VIII, Div.1, LATEST EDITION & ADDENDA EXMT UG20(f) CORR ALW 0 SH 0 HD
STD. TOLERANCES: M-2461 (UNLESS OTHERWISE NOTED) WELD DETAILS: M-1932

OMEGA
COMPRESSORS

VERTICAL AIR RECEIVER
PAINTLINE PRODUCTS

FILE LOCATION: O:\SolidWorks\3000\309264

DRAWN BY: _____ DATE: _____

APPR. BY: _____ DATE: _____

SCALE: NONE

DRWG NO.
AR-V30



ZONE	REV.	BY	DESCRIPTION	DATE	APP.